



Trust in Identification: an Historian's View

Speakers name: Edward Higgs
ejhiggs@essex.ac.uk

Date: 10 April 2012



Mistrust of the Self





Trust in Identification as a Relationship



The Identifye

Wants:

- ID that Works
- In the hands of those s/he trusts
- ID that does him/her no harm



Identification as Harm





Trust in Wonders



The Identifier

Wants:

- ID that works
- ID that eliminates risk
- ID that reassures



Declining Trust

Table 6.3. Confidence in leadership in the United States, 1966–1986 (% stating that they have a great deal of confidence in)

Institution	1986	1973	1966
The military	36	40	61
Higher education	34	44	61
Medicine	33	57	73
Supreme Court	32	33	50
TV news	27	41	
Religion	22	36	41
Congress	21		42
Local govt.	21	28	
The press	19	30	29
White House	19	18	
State govt.	19	24	
Federal govt.	18	19	41
Major companies	16	29	55
Law firms	14	24	
Trade Unions	11	20	22

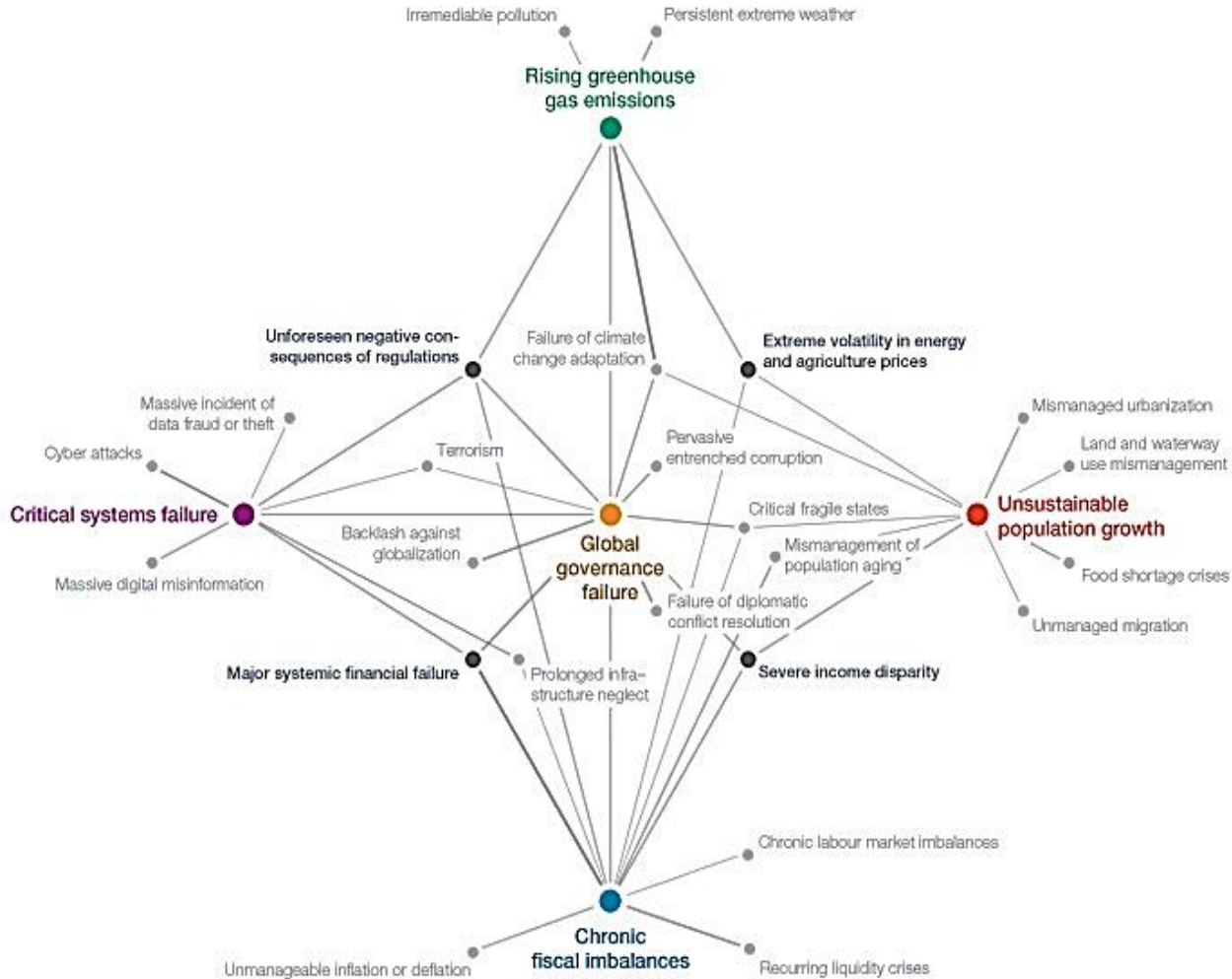
Source: Harris Polls, cited by Blumberg, *Predatory Society*, table 11.2, p. 204.



Our Fellow Citizens?



From Classical Liberalism to the Risk Society





From Patrons to Consumers



By Appointment to
Her Majesty The Queen
Scaffold Contractor
Country Scaffolding
Company (London) Limited



By Appointment to
Her Majesty The Queen
Manufacturer & Supplier of
HumberPalmer's Fertilisers
P B Kent & Co

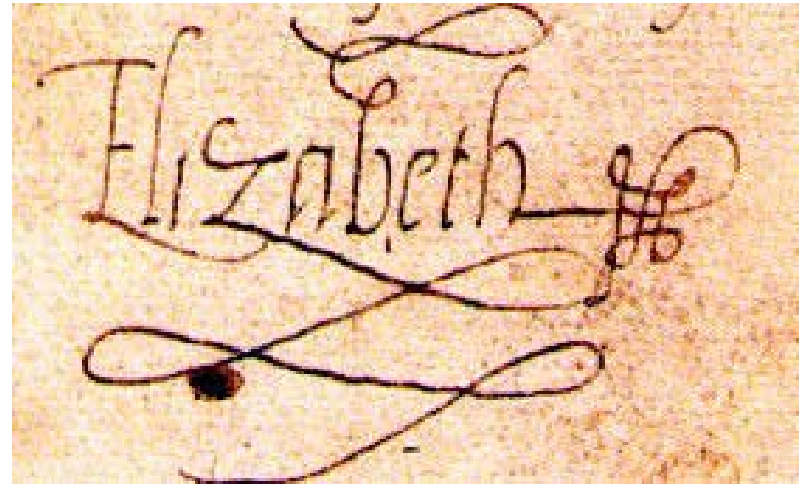


Changing Forms of State and States of Trust 1





Changing Forms of State and States of Trust 2



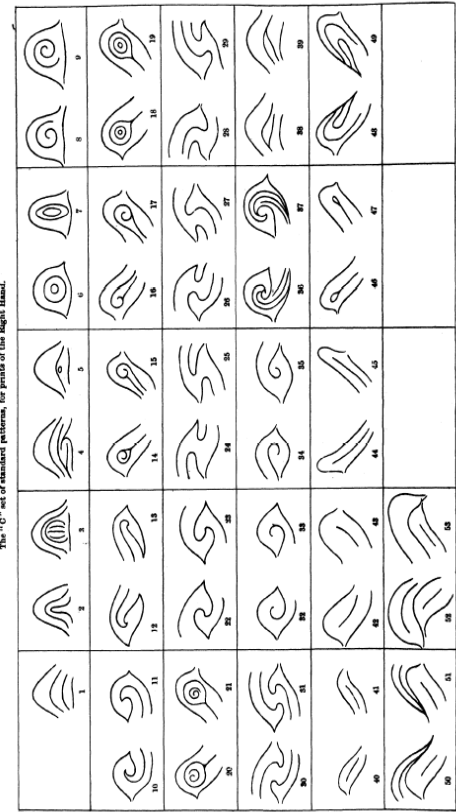
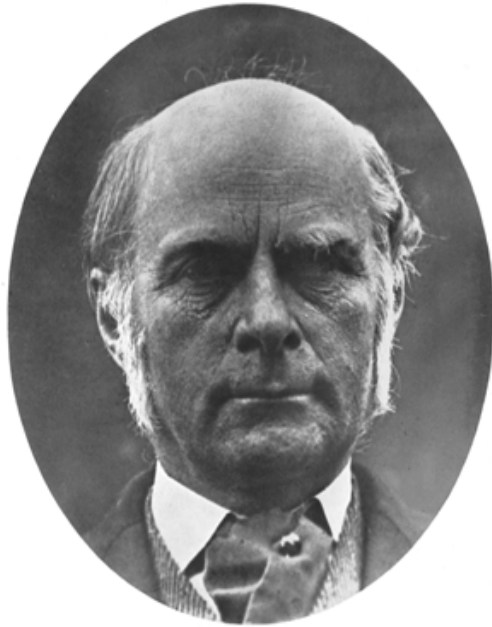


Trust in Magic?



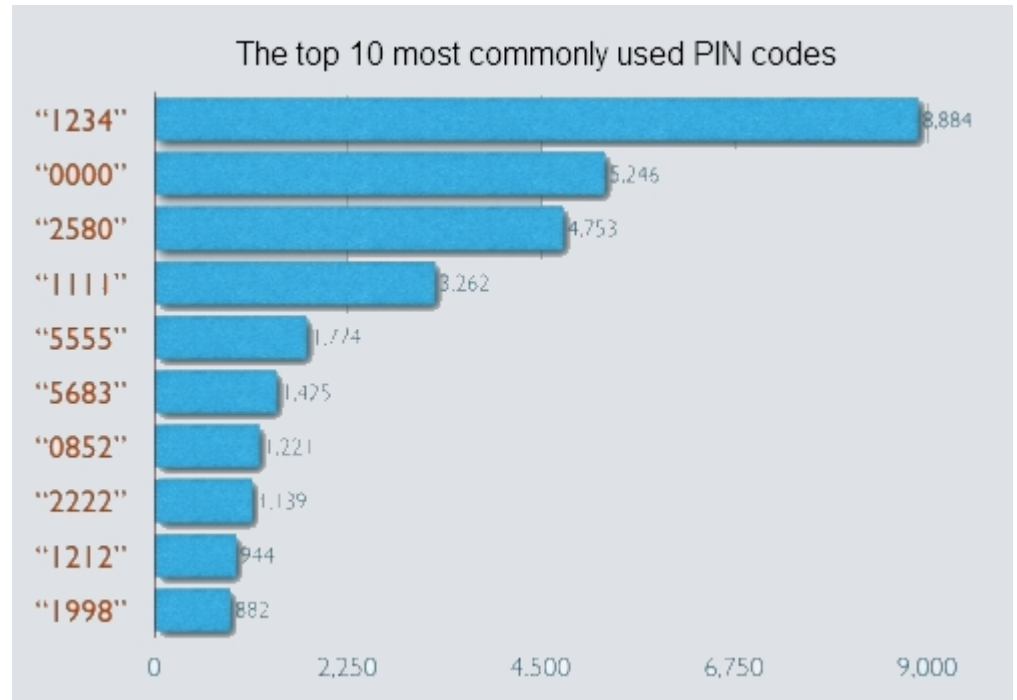


Trust as Probability



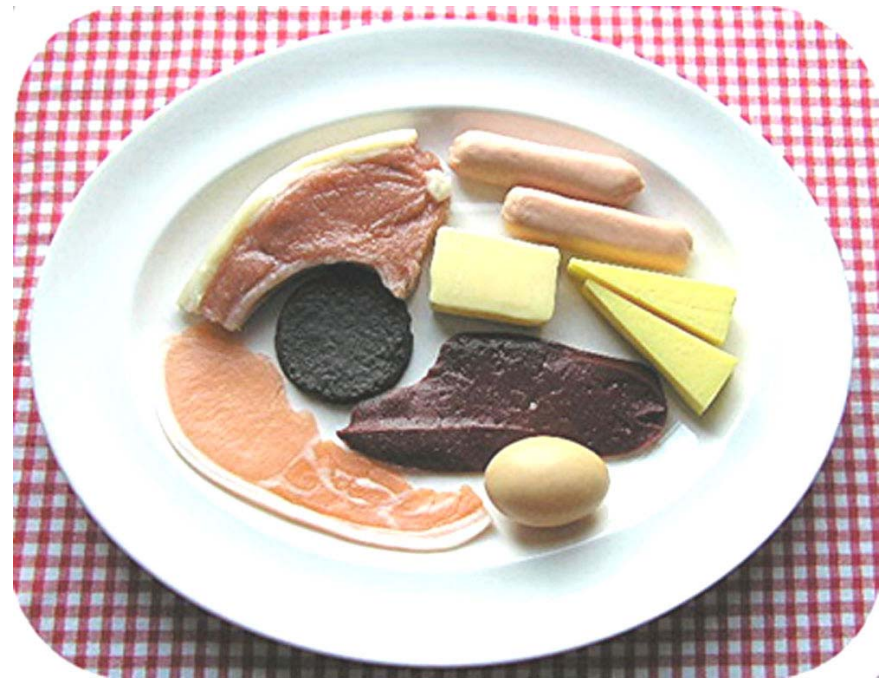


ID and the Modern Loss of Control



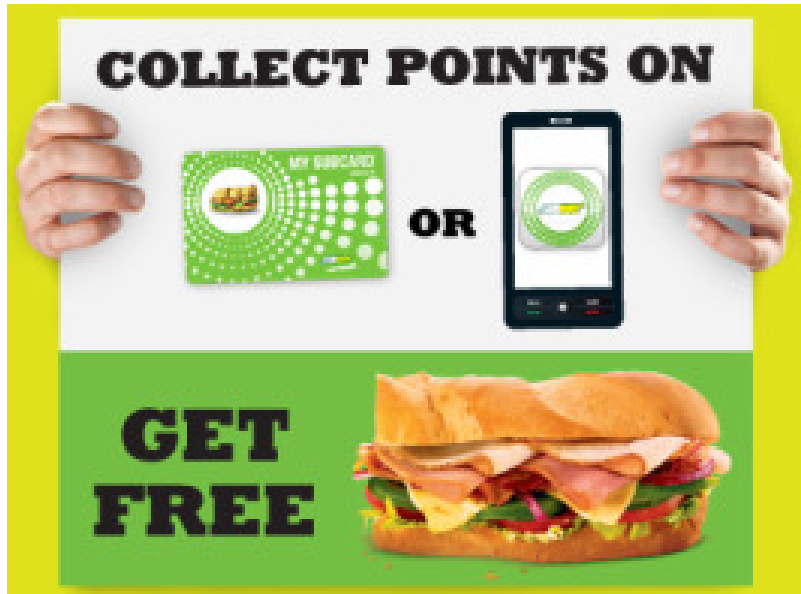


Trust as Access to Benefits





Faith in the Brand, Distrust of the State



Alphonse Capone



Freedom from the State





Some Conclusions 1

- Trust is part of a relationship, or transaction, not a state of being;
- Trust and ID have a problematic relationship because ID assumes distrust;
- Distrust is not a human constant but culturally and historically determined.



Some Conclusions 2

- Trust in ID reflects the nature of broader social relationships;
- ID that people “own” or can control are more trusted;
- Forms of ID are trusted if they provide benefits, rather than threaten harm;
- ID that is easy to use, and unproblematic, becomes invisible – part of the furniture of our lives that we accept implicitly.



Trust in Identification: an Historian's View

Speakers name: Edward Higgs
ejhiggs@essex.ac.uk

Date: 10 April 2012